



Heat Treatment

flamefast

LT1 LOW TEMPERATURE CASTING SYSTEM

Flamefast have always been at the forefront of Hot Metal equipment design for education. The LT1 Low Temperature Casting System has been designed to create unique links between Design & Technology and other curriculum areas such as ICT and Art. At the same time it offers a cost effective and safe method for demonstrating casting and moulding techniques. It allows casting and moulding to be undertaken in a standard classroom environment away from traditional workshop areas. The system is simple, easy and safe to use requiring only a standard 13amp 230vAC socket. It does not require any extraction system.

It has been designed so that pupils can observe safely the physical processes of melting and pouring metals. The unique cooling system keeps the entire case cold to touch. The internal melting pot has a clearly labelled swivel lid for observing the state of the molten metal and adding new material.

LEAD FREE PEWTER CASTING IN A SAFE AND SIMPLE PROCESS

The LT1 is thermostatically controlled which enables the pewter to be held at a constant temperature not requiring any user intervention. There are no lengthy set up times. A typical total ready to use time is just 15 minutes from first switching the system on.

The system is designed to use High Quality Lead Free Pewter from Flamefast, which melts at approximately 245°C. This allows the use of moulds which have been manufactured in vulcanised rubber, cardboard, MDF, woods, Cuttle Fish and many other materials.

Moulds can easily be made by hand or using CNC milling techniques.

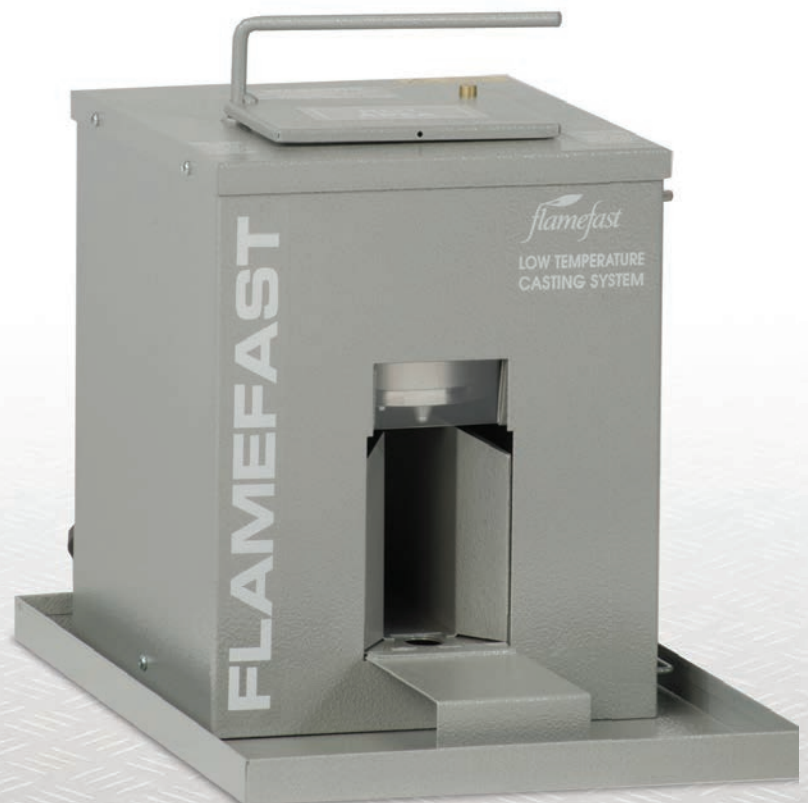
Alternatively, pre-made moulds can be purchased separately along with Pewter.



SCHEMES OF WORK

To assist teachers in preparing for lessons and make the integration of basic metalwork skills easier, Flamefast offer schemes of work for Low Temperature Casting.

Visit www.flamefast.co.uk for more details.



LT1 LOW TEMPERATURE CASTING SYSTEM

OVERVIEW

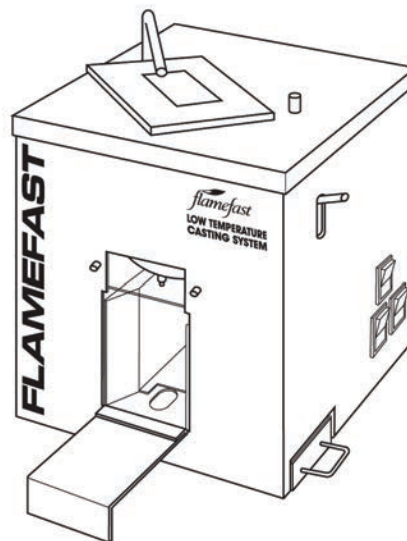
Flamefast have always been at the forefront of Hot Metal equipment design for education. The LT1 Low Temperature Casting System has been designed to create unique links between Design & Technology and other curriculum areas such as ICT and Art. At the same time it offers a cost effective and safe method for demonstrating casting and moulding techniques. It allows casting and moulding to be undertaken in a standard classroom environment away from traditional workshop areas. The system is simple, easy and safe to use requiring only a standard 13amp 230vAC socket. It does not require any extraction system.

It has been designed so that pupils can observe safely the physical processes of melting and pouring metals. The unique cooling system keeps the entire case cold to touch. The internal melting pot has a clearly labelled swivel lid for observing the state of the molten metal and adding new material.

LEAD FREE PEWTER CASTING IN A SAFE AND SIMPLE PROCESS

The LT1 is thermostatically controlled which enables the pewter to be held at a constant temperature not requiring any user intervention. There are no lengthy set up times. A typical total ready to use time is just 15 minutes from first switching the system on.

The system is designed to use High Quality Lead Free Pewter from Flamefast, which melts at approximately 245°C. This allows the use of moulds which have been manufactured in vulcanised rubber, cardboard, MDF, woods, Cuttle Fish and many other materials. Moulds can easily be made by hand or using CNC milling techniques. Alternatively, pre-made moulds can be purchased separately along with Pewter.



DIMENSIONS

Height	300 mm
Width	242 mm
Depth	280 mm
Weight	10 kg

OTHER INFORMATION

MAX MOULD SIZE

- 100 x 30 mm in the mould holding device
- Larger sizes can be achieved without the use of the mould holding device

PERFORMANCE

- 240vAC @ 6amps continuous
- Maximum temperature 260° C
- 2.3kg Crucible capacity for Lead Free Pewter
- Thermostatically controlled at either 250° or 150° C

STANDARD SUPPLY

- Low Temperature casting unit.
- Mould holder and clip.
- 5 sticks of Lead Free Pewter - approx. 1kg.
- 1 MDF mould.
- Spill tray.

OPTIONAL EXTRAS

- Vulcanised rubber moulds including:
- Tudor King and Queen.
 - World One Soldier.
 - Roman Soldier.
 - Pendant Pig.
 - Pendant Teddy.
 - Lead Free Pewter.